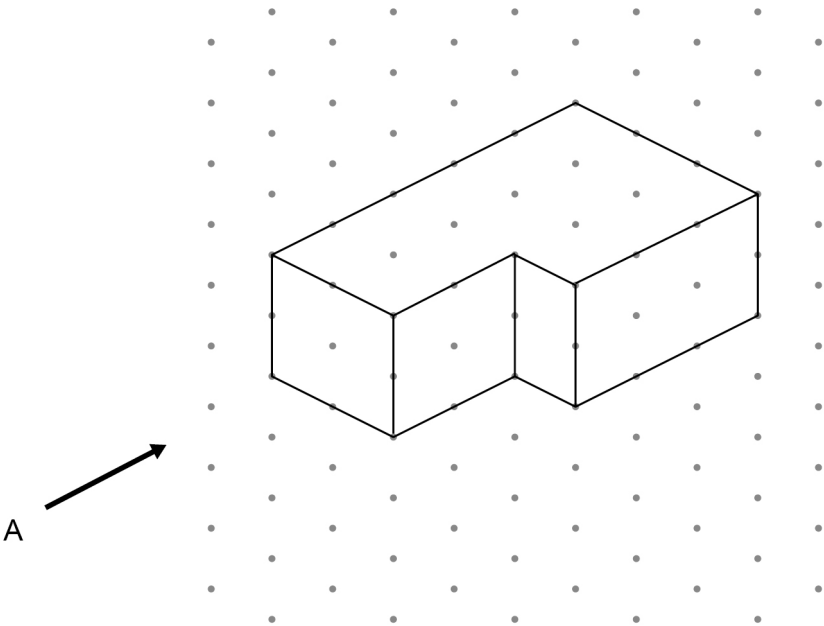
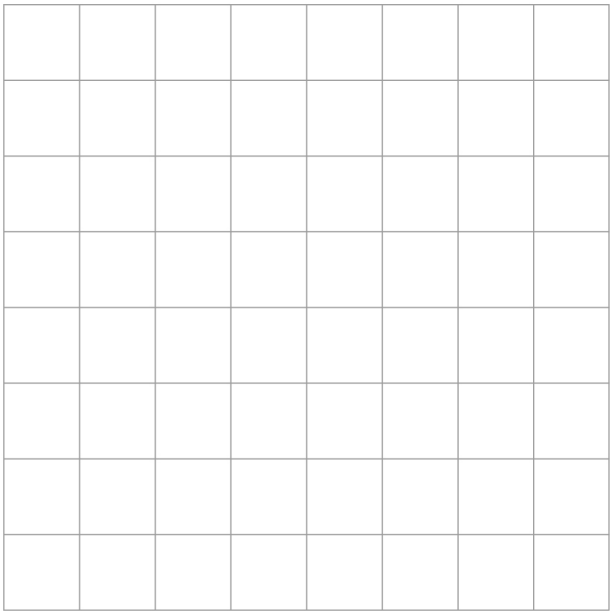


1 A solid shape is drawn on isometric paper.



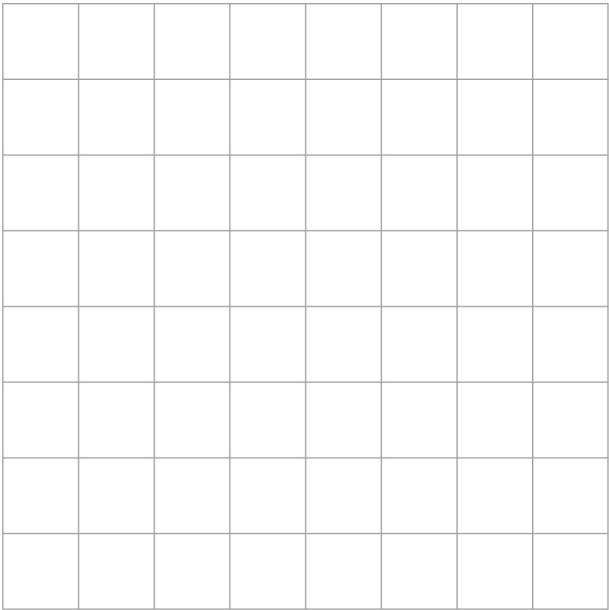
1 (a) On the centimetre grid, draw the elevation of the shape from A.

[1 mark]



1 (b) On the centimetre grid, draw a plan of the shape.

[1 mark]

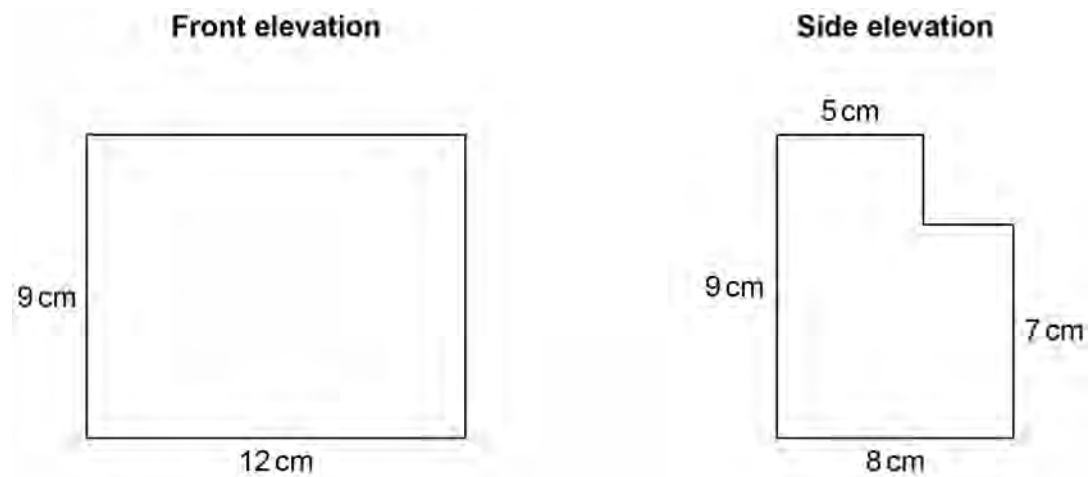


2

A solid shape is made from centimetre cubes.

The front elevation and side elevation of the shape are shown.

Not drawn
accurately



Work out

the **maximum** possible number of cubes in the shape

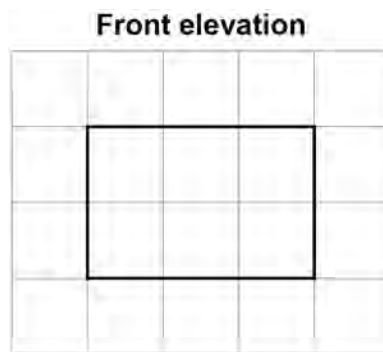
and

the **minimum** possible number of cubes in the shape.

[3 marks]

Maximum _____ Minimum _____

- 3 The front elevation of a cuboid is shown on this centimetre grid.



The volume of the cuboid is 42 cm^3

Draw the **side elevation** on this centimetre grid.

[2 marks]

